

# BRUNCH

served until 4pm

## FAVOURITES

**Fried chicken, egg & croissant waffle** 13

Merrifield Farm chicken, sausage gravy

**Avocado chilli & lime on toast** (ve) 8

add eggs 2.5

**Whole baked sea bream** 14.5

served with either fries, green salad or  
apple & fennel slaw

**Full veggie** (v) 9.5

fried eggs, tarragon mushrooms, spice-roasted  
tomato, hash brown, spinach, beans & toast

## FRUIT, GRAINS & SALADS

**Fruit waffle** (v) 8

apple compote, yoghurt, honey

**House granola** (v) 5

Greek style yoghurt & apple compote

**Spice-roasted cauliflower** (ve) 10

chickpeas, wilted spinach & curried aubergine sauce

**Kale, avocado & herb salad** (ve) 6/9

roast carrots, toasted seeds

**Baked aubergine with herb crumb** (v) 11

harissa yoghurt & St Swithins chilli cheese

## BURGERS

**Brunch burger** 10

fried eggs, bacon, sausage patty, Oglesfield,  
tomato & mushroom

**Chicken burger & fries** 13.5

fried chicken breast, kewpie mayonnaise

**Double bacon & cheese burger & fries** 13.5

two dry-aged beef patties, streaky bacon  
& American cheese

## STEAK

**Steak & eggs** 15

rump, spice-roasted tomato &  
eggs any way

**Ribeye or sirloin** 24.5

served with either fries, green  
salad or apple & fennel slaw

## EGGS

**On toast** (v) 5.5

any way

**Caponata & eggs** 7.5

aubergine, olives, capers,  
anchovy & parmesan

**Loch Duart smoked salmon** 9.5

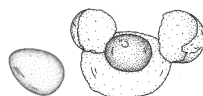
eggs any way, on toast

## EXTRAS

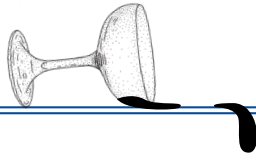
**bacon, flat sausage,**

**avocado** 2.5

**smoked salmon** 4



**We use free-range  
eggs from Breckland  
Brown chickens**



## BOTTOMLESS

served until 4pm  
1.5hr time limit applies

**BLOODY MARY** 14.5  
vodka, tomato juice, house spice mix, lemon

**BUBBLES** 18

**FILTER COFFEE** 3

---

## COFFEE & TEA

---

Coffee from Union Roasters & Tea from the Rare Tea Company

Bottomless filter	3
Espresso, Americano	3
Flat white, Latte, Cappuccino	3.25
Hot chocolate	3.25
RAF English breakfast, Earl Grey, Green, Chamomile	3
Fresh mint	3

**Milk from free-range Guernsey  
cows reared in Somerset by  
The Estate Dairy**

---

## SOFTS

---

Chegworth Valley Apple & Elderflower,	3
Iced Cucumber Green Tea	3.25
<b>Arnold Palmer</b> tea syrup, lemon, soda	3.5
<b>Grapefruit Soda</b> homemade grapefruit sherbert, grapefruit, soda	3.5
<b>Winter Iced Tea</b> black tea, winter spice syrup, lemon	3.5